

Community Benefit Annual Report



As part of our commitment to Adams and Weld counties and Colorado, Platte Valley Medical Center addresses the most critical needs of the communities we serve; with emphasis on helping people live the healthiest lives possible. We were founded to address health priorities, and through strong community partnerships and thoughtful assessment of needs, we continue that work today.

Increasing access to mental health care in Brighton

Mental health was identified by residents and leaders of Brighton and the surrounding areas as the number one community health need during the 2021 Community Needs Assessment.

One way Platte Valley Medical Center is working to improve access to mental health resources and remove the stigma surrounding it is through embedding Integrated Behavioral Health professionals in primary care clinics in Brighton and Reunion.

This integration between primary care and mental health care breaks down barriers to receiving mental health resources, because patients are screened for mental health and substance use disorder concerns during their primary care visits and can access resources and treatment in-clinic with the integrated behavioral health specialists on staff. They have found that patients are more accepting of the referral because of the trust that they have with their primary care provider.

“Integrated behavioral health helps break down the stigma of accessing mental health and substance use disorder care, especially for people who can’t afford to pay private therapists out of pocket,” said Peggy Jarrett, Regional Director of Community Health Improvement for Platte Valley. “We are excited to be able to offer this service to our community.”



Platte Valley Medical Group-Reunion Family Medicine staff are adding integrated behavioral health care within their primary care practice to increase access to care and reduce stigma.

2022-2024 Community Health Priorities

Every three years, Platte Valley partners with public health, other health care providers, and community members to assess the most important health needs in the community. Following the assessment, the hospital chooses health priorities on which it will focus Community Benefit efforts.

With the assessment completed in 2021, Platte Valley is focused on the following health priorities for Community Benefit programming:



Platte Valley Medical Center Community Partners, 2021

- A Precious Child
- Adams County Health Alliance
- Aims Community College
- Almost Home, Inc.
- Alzheimer’s Association
- Arapahoe Community College
- BAART
- Bird Conservancy of the Rockies
- Brighton Chamber of Commerce
- Brighton Fire Rescue District
- Brighton Police Department
- Brighton Recreation Center
- Brighton School District 27J
- Brothers Redevelopment
- Calvary Chapel
- CASA
- Catholic Charities of Weld County
- City of Brighton
- Colorado Christian University
- Commerce City Chambers of Commerce
- Community Baptist Church
- Community College of Denver
- Community Reach Center
- Denver College of Nursing
- Eagle View Adult Center
- Food for Hope
- Fort Lupton Chamber of Commerce
- Fort Lupton Fire Protection District
- Front Range Community College
- Grand Canyon University
- Hope @ Miracle House
- Housing Authority of Brighton
- Hudson Fire Protection District
- Lochbuie Police Department
- Mental Health First Aid Colorado
- Metro State University
- National Council on Aging (NCOA)
- Northeastern Junior College
- Northern Hills Church
- Pennock Center for Counseling
- PIMA Medical Institute
- Project Angel Heart
- Project Cure
- Red Rocks Community College

(continued on back)

What is Community Benefit?

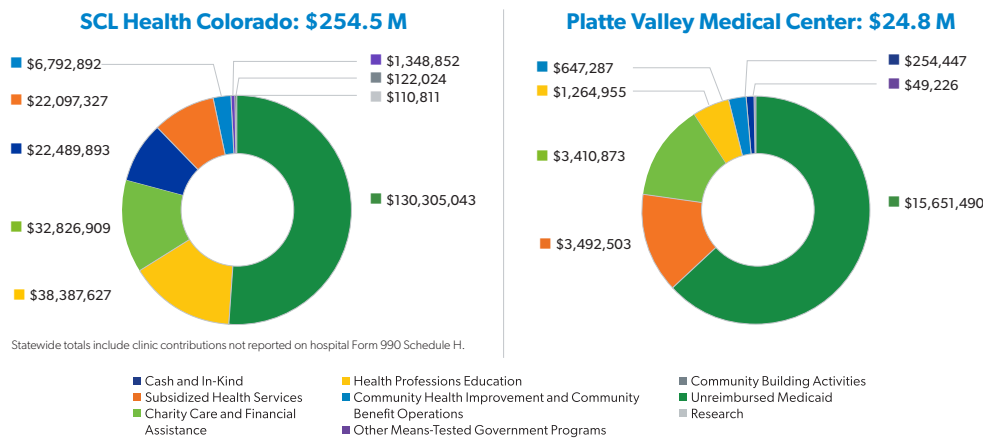
The IRS requires nonprofit hospitals to report their investments in Community Benefit activities. These are activities that respond to an identified community health need and:

- Improve access to care
- Enhance the health of a community
- Advance medical or health knowledge
- Reduce the burden of local, state, federal government, or other community efforts

When reporting to the IRS, Community Benefit investments are organized into the following general categories:

- Unreimbursed costs for care provided to Medicaid beneficiaries
- Charity care and financial assistance for patients who are unable to pay for care
- Cash and in-kind contributions to support identified community health needs
- Health professions education, including clinical training for nursing, pharmacy, and other health professions
- Subsidized health services, which are services provided at a loss but without which the community's access to care would suffer
- Means-tested government programs, which includes the unreimbursed care under means-tested programs like the Children's Health Insurance Plan.
- Community building activities, including participating in community coalitions to advance health and physician recruitment to maintain health care access
- Research includes studies or investigations

2021 Community Benefit Investments



2021, By the Numbers



Number of community partners who work with Platte Valley to address priority community health needs.



Number of nursing, pharmacy, and other health professions students who received clinical training at Platte Valley.



Number of people who came through the Platte Valley COVID vaccination clinic offered from December 2020 through May 2021.

5

Number of hospital departments that were subsidized health services, paid for by Platte Valley to ensure they remain open to the community, including the infusion center for cancer care, neonatal intensive care for premature and ill newborns, wound care to help people recover from injury and illness without infections, and more.



Platte Valley Medical Center Community Partners, 2021 (continued)

- Regis University
- Richard Lambert Foundation
- Rocky Mountain Stroke Center
- Salud Family Medicine
- Shopneck Boys and Girls Club
- Signal Behavioral Health
- Southeast Weld County Chamber of Commerce
- Southeast Weld Fire Protection District
- The Family Tree
- Thriving Weld County
- University of Colorado
- University of Northern Colorado
- Via Mobility
- Vitalant
- Weld Food Bank
- Weld RE-8 School District
- Zero Suicide Collaborative